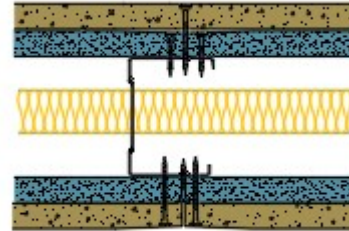


AS70-S-166SR(25) - SPEEDLINE System Data Sheet - Version V1 (24-10-23)

SPEEDLINE 70mm Acoustic 'C' Stud Partition
 @600mm Ctrs, with Inner Siniat GTEC 15mm dB
 Board, Outer Siniat GTEC 15mm
 Universal/Megadeco Board each side, 25mm APR



System Performance Breakdown

Fire Resistance:

BS476 Part 22:1987:

Test Ref & Date or Applied Ref & Report:

Max Height:

Thickness:

Duty Grade: BS 5234: Part 2:1992:

Sound Insulation:

60/60 Minutes (Integrity/Insulation).

BRE-P100456-1085 - BRE Report P102396-1011C

Refer to Speedline Specification Clause

132 mm. (At Base Track, Excluding Finishes)

Severe - Annexes A-F

56 R_w dB, -7 Ctr Date Tested or Assessed Against - 10/08/2011

Test Code:
H17527AA
Test Date:
10/08/2011

Freq. Hz	R dB
50	24.4
63	18.3
80	20.8
100	31.7
125	35.8
160	39.4
200	46.6
250	48.3
315	52.0
400	55.1
500	57.3
630	59.2
800	61.8
1 000	64.2
1 250	65.4
1 600	65.7
2 000	59.5
2 500	52.5
3 150	54.9
4 000	58.9
5 000	61.9
6 300	
8 000	
10 000	



Rating according to BS EN ISO 717-1:1997	R_w (C;Ctr) = 56 (-2;-7) dB		
Evaluation based on laboratory measurement results obtained by an engineering method:	Max dev. 7.5 dB at 2 500 Hz		
	$C_{50-1150} = -7$ dB	$C_{50-500} = -6$ dB	$C_{100-500} = -2$ dB
	$C_{1,50-1150} = -18$ dB	$C_{1,50-500} = -18$ dB	$C_{1,100-500} = -7$ dB

TESTED AT ONE OF THE UKAS
ACCREDITED LABORATORIES
BELOW

B.T.C
(H-Ref on Graph)

B.R.E

AIRO

S.R.L



Customer: Metsec plc Hepsec Division

BTC 17527A: Page 9 of 11



SPEEDLINE Drywall Systems, Adsetts House, 16 Europa View, Sheffield Business Park, Sheffield, S9 1XH.

Tel: 0114 231 8030.

Email: enquiries@speedlinedrywall.co.uk

(As per the requirements set out in ISO/IEC 17025:2017 regarding test data the results stated have been carried out by voestalpine Metsec plc as part of the contract to supply Speedline Metal Sections to SIG Plc)